

AIS Inspections and Data

Farm Island Lake

2018 Season

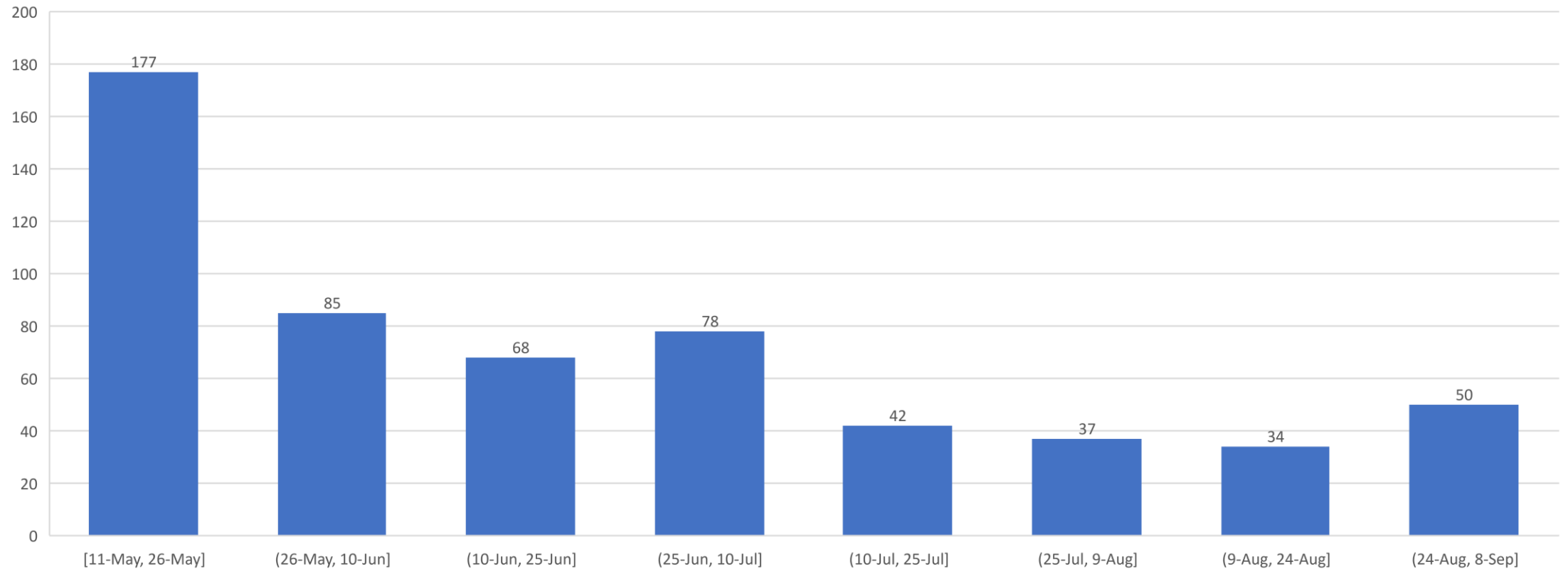
How many AIS Inspections Were done in 2018 at the North and South Public Access Points?

	<u>Entering Inspections</u>	<u>Exiting Inspections</u>
North Access	571	453
South Access	717	624

Total inspections = 2,365 and of those 661 listed Farm Island as the “last lake entered” so those generally were our own boats relaunching in the spring. The data here was only for the dates the launches were monitored which were 44 out of 114 days during this period (38% between May 11th and September 3rd)

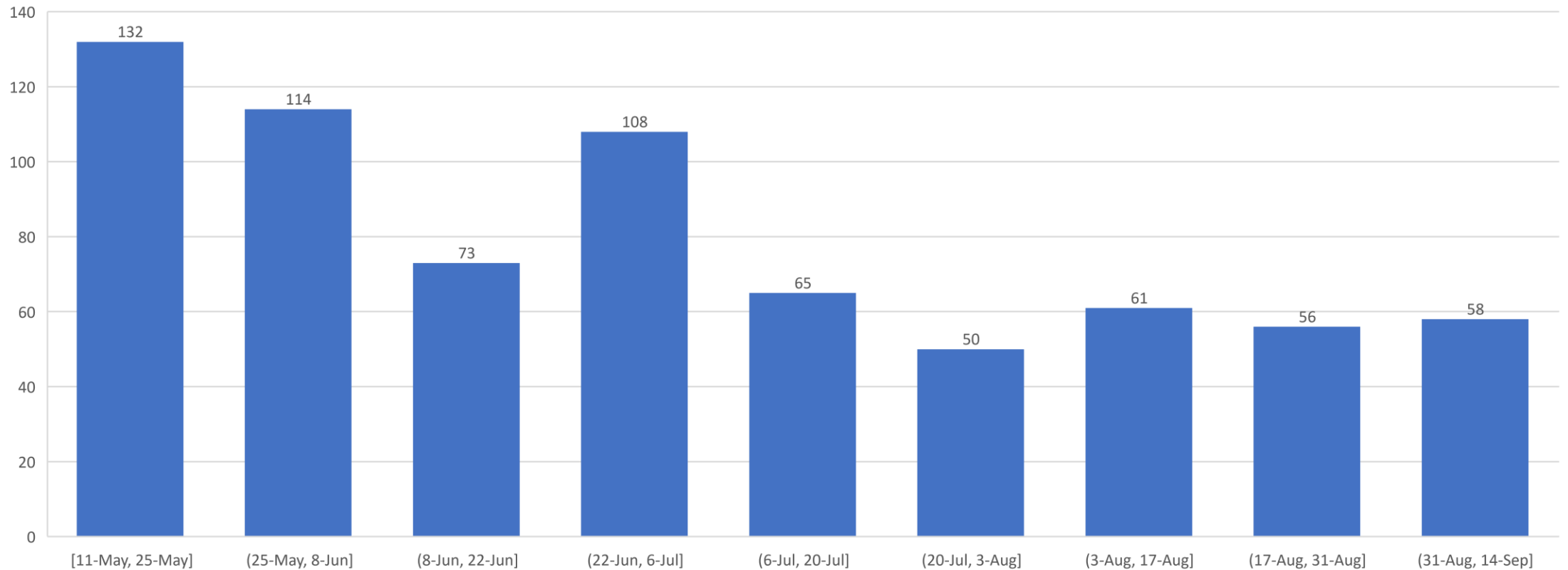
North Boat Launch Entering Inspections 11 May to 8 September 2018

Farm Island - North Boat Launch

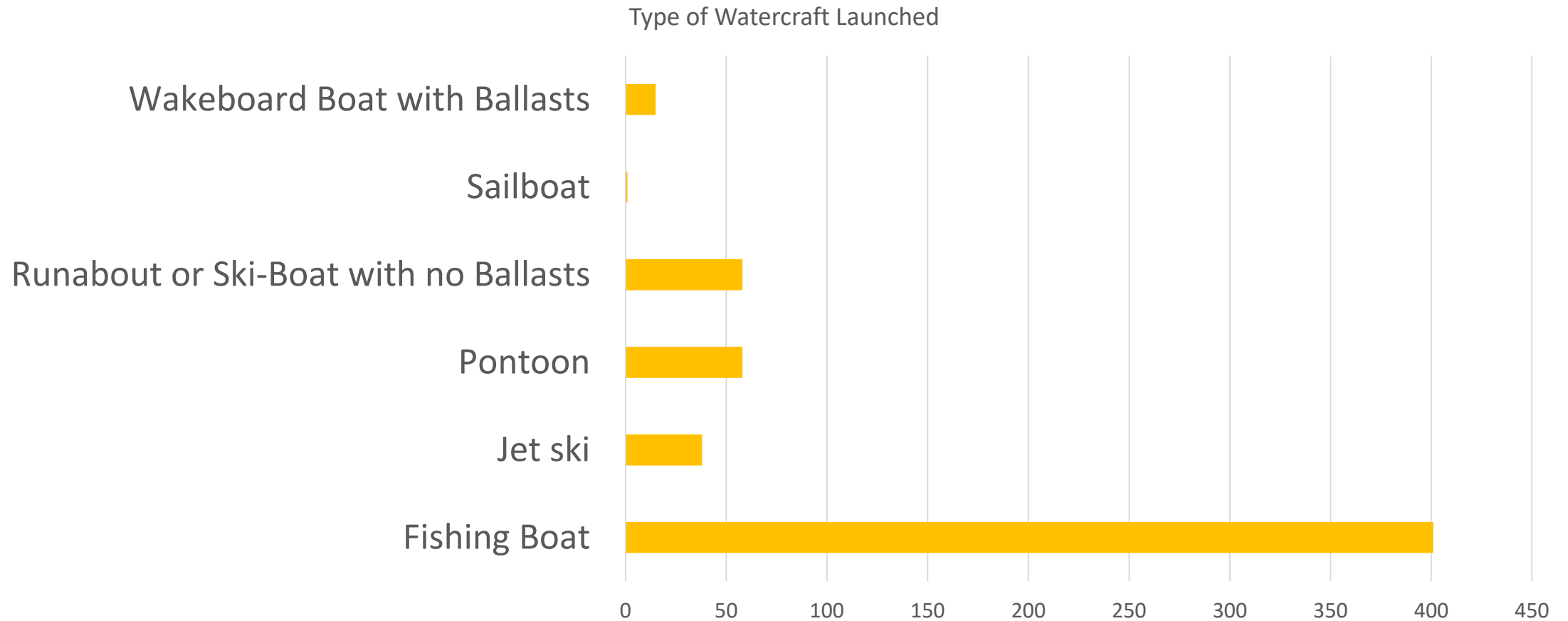


South Boat Launch Entering Inspections 11 May to 8 September 2018

Farm Island - South Boat Launch

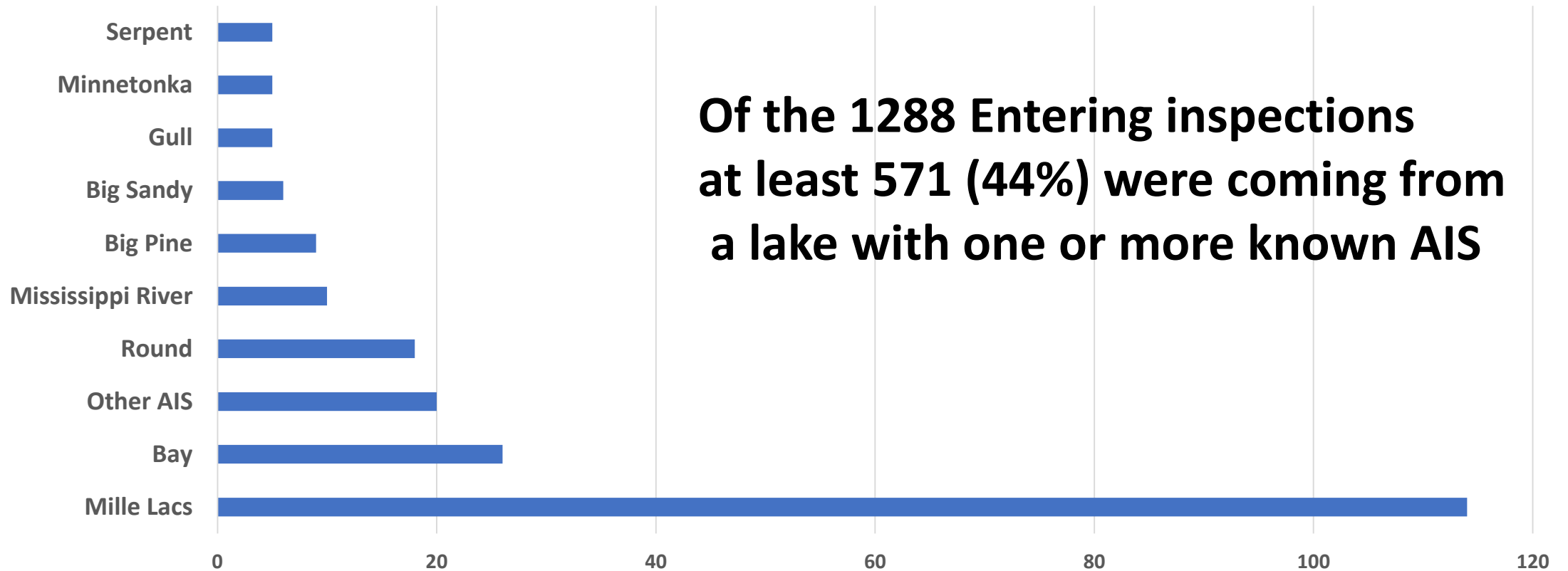


What Kind of Boats were Launched and Inspected?



Number of Boats Entering Where **the Last Lake Entered Has AIS** of One Kind or Another

Number of Launches from Lakes with AIS



Of the 1288 Entering inspections at least 571 (44%) were coming from a lake with one or more known AIS

Source of many AIS ? Lake Superior

starting in 1938

The Sea Lamprey
A native to the Atlantic Ocean

How and Why do they arrive

- Ocean going cargo ships, many from Europe and Asia, discharge their ballast tanks when they arrive in the Twin Ports before they load cargo to return to their home ports.

Since 1970

39 New non-native aquatic
organisms have been discovered

Lake Superior

15 were classified as other than
fish, invertebrates or diseases

Meaning plants or vegetation

Eurasian Milfoil is an
expensive nuisance but can
be managed

Not true for Zebra Mussels and other AIS

Prevention is the only remedy

Zebra Mussels

Native to Russia & Ukraine

First discovered in Lake Pepin in 1992,
now confirmed in 180 MN. waters
including Bay Lake & Mille LACS

**Presently, Bay Lake
invests over \$50,000.00
per year in water quality and lake access
inspection to control milfoil and zebra's**

Starry Stonewart

a native of Eurasia, discovered in Lake
Koronis in 2015

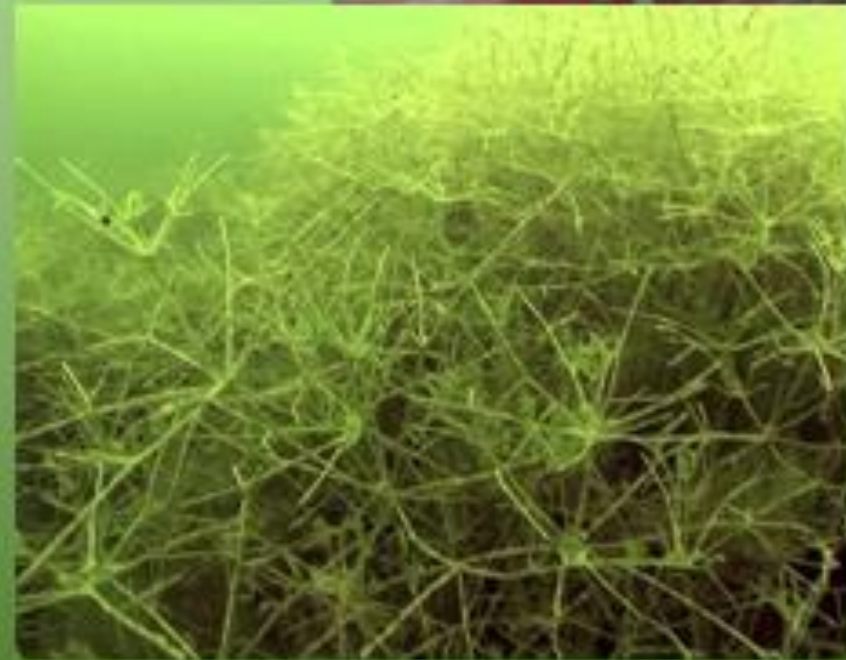
forms a dense surface mat in shallow water that
Inhibits swimming and boat access to main lake
basins

& clogs boat propellers.

It cannot be eradicated!

Starry Stonewort

- First confirmed in MN in Lake Koronis in 2015
- Similar in appearance to native algae
- Star-shaped bulbils
- Produces dense mats
- Displaces native aquatic plants
- Interferes with recreation



Your Lake Association has
received about \$60,000.00

thru DNR grants since 2015 to
fund our lake access inspectors.

We thank you for your support!