

How to locate and identify zebra mussels.

See pictures below.

A few pointers for searching:

- Zebra mussel juveniles can be very small- less than 1/4inch (~0.5cm) and adult mussels can be as large as 1.5 inches (4cm).
- The mussels will attach to mostly hard materials
- The mussels will often prefer shady areas like the inside of wheels/rims, inside of pipes, undersides of frame rails, etc.
- Zebra mussels often have the striped pattern on their shell but can appear dark/black too.
- The D-shaped shell is a good identification characteristic.

New reports can be sent directly to Tim Plude, Invasive Species Specialist. Take pictures of the mussel on the equipment where it was found, then also remove and keep the sample in the freezer for the Invasive Species Specialist to collect.

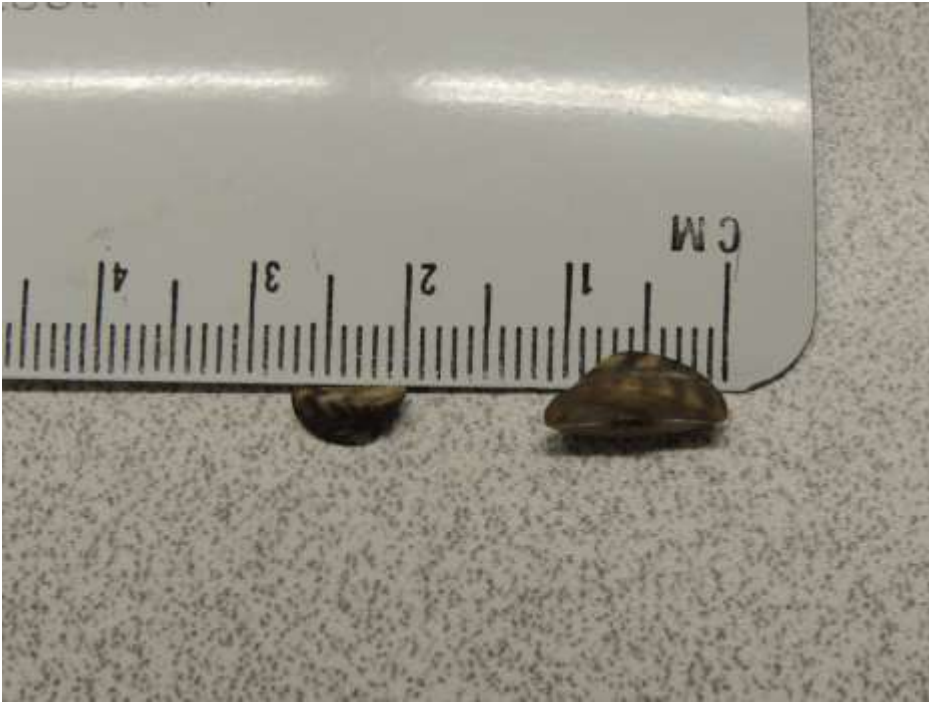
DNR Invasive Species Specialist contact information:

Tim Plude,
Invasive Species Specialist | Ecological & Water Resources
Minnesota Department of Natural Resources
1601 Minnesota Dr.
Brainerd, MN 56401

Phone: 218-203-4354

Email: timothy.plude@state.mn.us





Small juvenile zebra mussels with a ruler. They can be the size of a small fingernail to about the size of a lima bean





Adult zebra mussel attached to a rock



Adult zebra mussel attached to a wheel



Multiple zebra mussels attached to a dock leg



Zebra mussel attached to inside of wheel



A clump of zebra mussels. Notice the mussel in the forefront of this picture with distinct zebra stripe markings.