

BEST MANAGEMENT PRACTICES TO ENHANCE AND PROTECT THE LAKE

As property owners and visitors on Farm Island Lake we have a responsibility to protect and enhance the quality of the lake. We have seen improvements in many areas and we can continue to make gains by following these best management practices.

- 1. Practice Shoreline Management by maintaining a buffer zone between your yard and the lake.**
 - Limit fertilizing.
 - Slow shore run off by terracing your landscape.
 - Establish buffer zones of woody vegetation, tall grasses and native plants to prevent erosion and nutrients from reaching the lake.
 - Minimize the removal of aquatic plants since they help to stabilize shorelines and provide habitat for fish and other wildlife.
 - Take the Score Your Shore survey on our website.
- 2. Maintenance of your lawn.**
 - Limit fertilizing and don't fertilize within 50 feet of the lake.
 - **Use zero-phosphorus fertilizer.**
 - Keep grass clippings, leaves and pet waste out of the lake.
- 3. Prevent the spread of exotic and invasive species. Clean, Drain, Dispose, Dry.**
- 4. Septic systems should be up to code** with local ordinances and properly maintained.
 - Do not dispose of paint, solvents, pesticides, or household cleaners down the drain.
 - Minimize using antibacterial cleaning products.
 - Practice water conservation.
 - Have your septic system pumped at least every three years, more often if heavily used.
 - Systems with garbage disposals should be pumped every year.
- 5. Get involved with FILIA.**
 - Provide FILIA with your thoughts and suggestions on how we can continue to improve Farm Island Lake.

MNDNR BOATING AND FISHING GUIDE

is on our website and the DNR's. Here is some important information.

- PWC (jet skis) hours of operation are between 9:30 AM and sunset.
- PWC must travel at slow-no wake speed (5 mph or less) within 150 feet of shore, docks, swimmers, swimming rafts, any moored or anchored watercraft, or nonmotorized watercraft. Exception is when a PWC is launching or landing a water skier by the most direct route to open water.
- **It is illegal** to chase or harass wildlife, or weave through congested watercraft traffic or jump the wake of another watercraft within 150 feet of that boat.

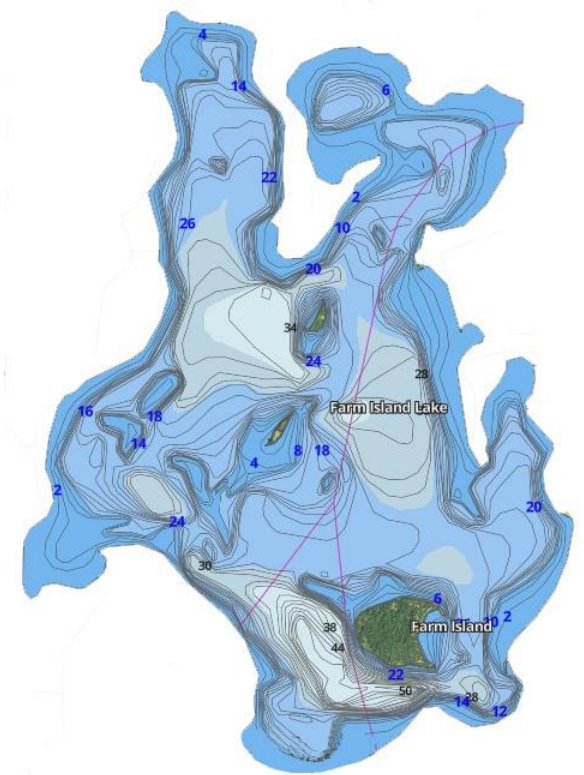


CURRENT FISHING AND BOATING REGULATIONS

are on FarmIslandLake.org or contact the MNDNR. There are yearly fishing regulations (**size slot limits, possession limits**) on every Minnesota lake. The state fishing slot limits are in addition to the lake specific slot limits. Check the yearly DNR fishing regulations and posts at the public landings prior to keeping or fishing for any type of fish.

PREVENT STARRY STONEWORT

Starry stonewort can negatively impact the ecological and recreational value of a lake. **Clean, drain, dry, and dispose** is very effective at preventing its spread.



FARM ISLAND LAKE IMPROVEMENT ASSOCIATION

"WORKING TOGETHER FOR A BETTER FARM ISLAND LAKE"

FarmIslandLake.org

FILIA

PO Box 135, Aitkin, MN 56431

FILIALake@gmail.com

The Farm Island Lake Improvement Association is a Minnesota nonprofit corporation, and a tax-exempt, environmental organization under article 501 (c) (3) of the U.S. Internal Revenue Code.

